



TOOLS WITH SAFETY



- Hydraulic Jacks
- Hand Pumps
- Electric Pumps
- Nut Splitters
- Flange Spreaders
- Hydraulic Pullers



ISO 9001:2008



TORC STAR
COMPLETE BOLTING SOLUTIONS

www.torcstar.com

HYDRAULIC JACKS/CYLINDERS

FLAT CYLINDERS

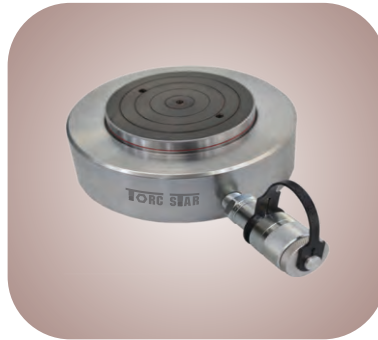
Single Acting, Spring Return



Model No.	Cylinder capacity (ton)	Stroke (mm)	Closed Height (mm)	Weight (Approx) (kg)
TCS 50	5	8	35	0.5
TCS 100	10	12	45	1.5
TCS 200	20	12	55	3
TCS 300	30	12	60	4.5
TCS 500	50	16	65	7
TCS 750	75	16	80	13
TCS 1000	100	16	85	17
TCS 1500	150	16	100	30
TCS 2000	200	16	115	45

SUPER FLAT CYLINDERS

Single Acting, Load Return



Model No.	Cylinder capacity (ton)	Stroke (mm)	Closed Height (mm)	Weight (Approx) (kg)
TSF 10	10	10	30	1.5
TSF 20	20	10	35	2
TSF 30	30	10	40	3.5
TSF 50	50	10	50	7.5
TSF 100	100	10	70	19
TSF 150	150	10	75	31
TSF 200	200	10	80	45

- Used in confined area with extremely low clearance.
- Ideally suited for precision lifting, alignment of machinery.

COMPACT PROFILE CYLINDERS

Single Acting, Spring Return



Model No.	Cylinder capacity (ton)	Stroke (mm)	Closed Height (mm)	Weight (Approx) (kg)
TCC 101	10	30	90	2.5
TCC 201	20	50	115	5
TCC 302	30	50	120	6
TCC 502	50	60	125	11
TCC 752	75	60	145	20
TCC 1002	100	60	150	24
TCC 1502	150	60	175	43
TCC 2002	200	60	200	66

- Low profile designed for use in confined area.

ALUMINUM BODY CYLINDERS

Single Acting, Spring Return



Model No.	Cylinder capacity (ton)	Stroke (mm)	Closed Height (mm)	Weight (Approx) (kg)
TCA 202	20	50	125	2
TCA 206		150	270	3
TCA 302	30	50	130	2.5
TCA 306		150	280	5.5
TCA 502	50	50	145	5
TCA 506		150	295	10
TCA 1002	100	50	165	11
TCA 1006		150	320	20
TCA 1502	150	50	185	18.5
TCA 1506		150	345	34
TCA 2002	200	50	200	28
TCA 2006		150	370	49

Features:

- Almost half the weight of steel jack with same specification.
- Composite bearings as guide avoid metal to metal contact.
- Inhibits corrosion resistance.

HOLLOW-CORE CYLINDERS

Single Acting, Spring Return



Model No.	Cylinder capacity (ton)	Stroke (mm)	Closed Height (mm)	Weight (Approx) (kg)
THC 102	10	50	160	5
THC 103		75	185	5.5
THC 104		100	210	6
THC 202	20	50	165	7.5
THC 204		100	215	12
THC 206		150	265	15
THC 302	30	50	185	12
THC 303		75	210	13.5
THC 304		100	235	14
THC 306		150	285	16.5
THC 503	50	75	220	24
THC 504		100	245	26
THC 603	60	75	235	32
THC 604		100	260	35
THC 606		150	310	40
THC 1003	100	75	265	58
THC 1004		100	290	62

HOLLOW-CORE CYLINDERS

Double Acting, Oil Return



Model No.	Cylinder capacity (ton)	Stroke (mm)	Closed Height (mm)	Weight (Approx) (kg)
TDH 103	10	75	210	6
TDH 104		100	235	7
TDH 202	20	50	195	10
TDH 204		100	245	12.5
TDH 206		150	295	15
TDH 302	30	50	210	15
TDH 304		100	260	18
TDH 306		150	310	21
TDH 504	50	100	270	27
TDH 603	60	75	260	30
TDH 604		100	285	33
TDH 606		150	335	38
TDH 1003	100	75	290	52
TDH 1004		100	315	56

Features:

- For removing and assembling bearing bushes, pins, cylinder liners, pulling tubes of heat exchangers, gears and flanges of machinery.

HYDRAULIC JACKS/CYLINDERS

GENERAL PURPOSE CYLINDERS

Single Acting, Spring Return



Model No.	Cylinder capacity (ton)	Stroke (mm)	Closed Height (mm)	Weight (Approx) (kg)
TCG 52	5	50	140	1.5
TCG 54		100	190	2
TCG 56		150	240	2.7
TCG 102	10	50	140	2.5
TCG 104		100	190	4
TCG 106		150	240	5
TCG 108		200	290	6
TCG 152	15	50	150	4
TCG 154		100	200	6
TCG 156		150	250	7
TCG 158		200	300	8
TCG 202	20	50	155	5.5
TCG 204		100	205	6.5
TCG 206		150	255	7.5
TCG 208		200	305	9.5
TCG 252	25	50	170	8
TCG 254		100	220	10
TCG 256		150	270	12
TCG 258		200	320	14
TCG 302	30	50	180	11
TCG 304		100	230	13
TCG 306		150	280	16
TCG 308		200	330	18
TCG 502	50	50	190	19
TCG 504		100	240	23
TCG 506		150	290	27
TCG 508		200	340	32
TCG 752	75	50	195	28
TCG 754		100	245	34
TCG 756		150	295	40
TCG 758		200	345	45
TCG 1002	100	50	215	39
TCG 1004		100	265	46
TCG 1006		150	315	54
TCG 1008		200	365	61
TCG 1502	150	50	225	66
TCG 1504		100	275	78
TCG 1506		150	325	90
TCG 2002	200	50	240	94
TCG 2004		100	290	110
TCG 2006		150	340	126

GENERAL PURPOSE CYLINDERS

Double Acting, Oil Return



Model No.	Cylinder capacity (ton)	Stroke (mm)	Closed Height (mm)	Weight (Approx) (kg)
TCDL 102	10	50	190	5
TCDL 104		100	240	8
TCDL 106		150	290	10
TCDL 152	15	50	190	9
TCDL 154		100	240	11
TCDL 156		150	290	12
TCDL 202	20	50	195	11
TCDL 204		100	245	13
TCDL 206		150	295	15
TCDL 252	25	50	200	12
TCDL 254		100	250	14
TCDL 256		150	300	16
TCDL 302	30	50	205	12
TCDL 304		100	255	14
TCDL 306		150	305	17
TCDL 502	50	50	177	21
TCDL 504		100	227	25
TCDL 506		150	277	29
TCDL 1002	100	50	183	47
TCDL 1004		100	233	54
TCDL 1006		150	283	62
TCDL 1502	150	50	212	76
TCDL 1504		100	262	88
TCDL 1506		150	312	100
TCDL 2002	200	50	230	98
TCDL 2004		100	280	114
TCDL 2006		150	330	132
TCDL 2502	250	50	257	131
TCDL 2504		100	307	149
TCDL 2506		150	357	168
TCDL 3002	300	50	350	155
TCDL 3004		100	400	179
TCDL 3006		150	450	205
TCDL 4002	400	50	380	218
TCDL 4004		100	430	249
TCDL 4006		150	480	280
TCDL 5002	500	50	425	280
TCDL 5004		100	475	318
TCDL 5006		150	525	356

• Lifting, positioning, application in heavy fabrications, ship-building and construction industries.

HEAVY-LIFT, THREADED RAM WITH SAFETY LOCK NUT CYLINDERS



Model No.	Cylinder capacity (ton)	Stroke (mm)	Closed Height (mm)	Weight (Approx) (kg)
TCT 102	10	50	150	2.5
TCT 104		100	200	4
TCT 106		150	250	5
TCT 152	15	50	160	4
TCT 154		100	210	6
TCT 156		150	260	7
TCT 202	20	50	170	7
TCT 204		100	220	8
TCT 206		150	270	9
TCT 252	25	50	185	8
TCT 254		100	235	10
TCT 256		150	285	12
TCT 302	30	50	195	11
TCT 304		100	245	13
TCT 306		150	295	15
TCT 502	50	50	210	19
TCT 504		100	260	23
TCT 506		150	310	26
TCT 1002	100	50	250	40
TCT 1004		100	300	47
TCT 1006		150	350	55
TCT 1502	150	50	265	66
TCT 1504		100	315	78
TCT 1506		150	365	90
TCT 2002	200	50	280	93
TCT 2004		100	330	108
TCT 2006		150	380	124
TCT 2502	250	50	295	115
TCT 2504		100	345	139
TCT 2506		150	395	160
TCT 3002	300	50	310	155
TCT 3004		100	360	180
TCT 3006		150	410	205
TCT 4002	400	50	350	230
TCT 4004		100	400	254
TCT 4006		150	450	285
TCT 5002	500	50	375	301
TCT 5004		100	425	327
TCT 5006		150	475	365

• Suited for applications requiring sustained load holding such as concrete pile testing bridge support work in construction industries.

NOTE : ALL ABOVE JACKS ARE ALSO AVAILABLE UPTO 1000 TONES IN 100, 150 & 200 STROKES.

HYDRAULIC JACK PUMPS

HYDRAULIC HAND PUMPS

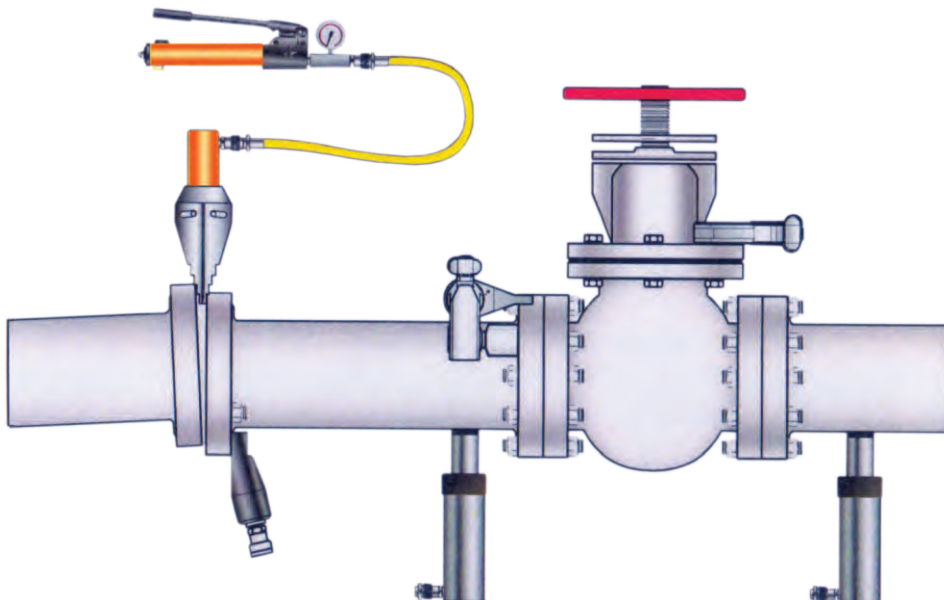


MODEL NO.	STAGE	OIL TANK CAPACITY	PRESSURE	FLOW 1ST STAGE	FLOW 2ND STAGE
TMP-2	Single	1.4 Ltrs	700 bar	—	2.8
TMP-3	Single	2 Ltrs	700 bar	—	2.8
TMP-5	2 stage	5 Ltrs	700 bar	49	2.8
TMP-8	2 stage	8 Ltrs	700 bar	49	2.8
TMP-13	2 stage	13 Ltrs	700 bar	49	2.8
TMP-20	2 stage	20 Ltrs	700 bar	49	2.8

ELECTRICAL PUMPS

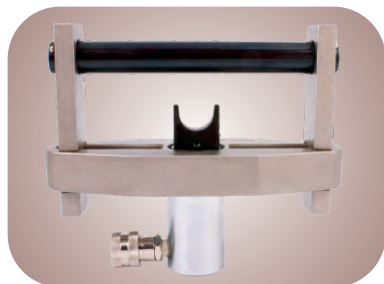


ACCESSORIES



HYDRAULIC FLANGE SPREADERS

PIN TYPE



Model No.	Capacity	Stroke	Weight
TPFS - 5	5 T	38 mm	9 kg
TPFS - 10	10 T	54 mm	14 kg

Hydraulic Flange Spreaders are available of 5 and 10 tonnes the versatility of both models enables the user to open flanges up to 54mm thickness. It can be operated individually, or as a pair when opening large diameter flanges.



CROCODILE DESIGN



Type	Manual	Hydraulic
Model No.	TFS-8M	TFS-14H
Jaws Closed	6mm / 0.24"	6mm / 0.24"
Jaws Open	80mm / 3.16"	80mm / 3.16"
Rated Force	8ton / 17,000lbs	14ton / 30,000lbs
Weight	7kg / 16lbs	8kg / 18lbs



CASTING DESIGN

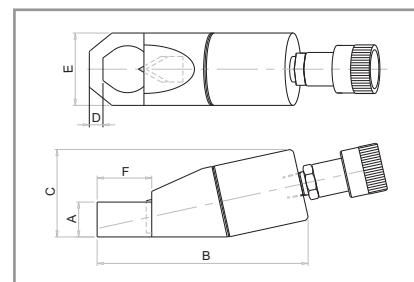


Type	Manual	Hydraulic
Model No.	TFS-10M	TFS-10H
Jaws Closed	2.3mm / 0.09"	2.3mm / 0.09"
Jaws Open	76.2mm / 3"	76.2mm / 3"
Width of Jaws	114mm / 4.5"	114mm / 4.5"
Width of Body	114mm / 4.5"	114mm / 4.5"
Jaw Penetration	38.1mm / 1.5"	38.1mm / 1.5"
Rated Force	4.5ton / 10,000lbs	4.5ton / 10,000lbs
Weight	6.1kg / 13lbs	5.4kg / 12lbs

HYDRAULIC NUT SPLITTER



Torc Star Nut Splitter is sold Complete with Hydraulic Cylinder, Housing, Chisel, Set of Allen Keys, Spacer Set and is packed in a Rugged Steel Tool Box.



Model No.	Hex Size (mm)	Thread Size (mm)	A (mm)	B (mm)	C (mm)	D (mm)	E (mm)	F (mm)	Wt. (Approx) (Kg)
TNS 1019	10-19	M6-M12	40	52	8	20	130	30	1
TNS 1924	19-24	M12-M16	54	67	12	24	163	41	2
TNS 2432	24-32	M16-M22	64	79	13	30	187	52	3
TNS 3241	32-41	M22-M27	78	94	20	37	219	69	4.5
TNS 4150	41-50	M27-M33	95	113	21	45	265	78	9.6
TNS 5060	50-60	M33-M39	106	128	25	54	297	91	13
TNS 6075	60-75	M39-M48	156	185	27	75	375	110	34

NOTE :

- ALL ABOVE NUT SPLITTERS ARE AVAILABLE IN ANGLE HEAD TYPE.
- NUT SPLITTERS ARE AVAILABLE FOR HIGHER SIZES ARE REQUEST.
- ACCESSORIES LIKE PUMPS, CUPPLERS, HOSE ARE AVAILABLE EXCLUDING.

HYDRAULIC PULLERS

HEAVY DUTY MASTER PULLERS

Model No.	No. of Jaws	Capacity (ton)	Reach 'A' (mm)	Spread 'B' (mm)
TPA 10 3J	3	10	265	300
TPA 20 3J	3	20	300	400
TPA 30 3J	3	30	485	550
TPA 50 3J	3	50	730	800
TPA100 3J	3	100	1025	1250

Features :

- Two and three jaw design.
- Drop forged steel jaw for high strength.
- Jaw surface coated for corrosion protection.
- Flexible with adjustable reach and spread.

Application :

- Maintenance of workshop equipment. Removal of wheels, pulleys, gears, sleeves and other press fit assemblies.



BEARING / PUSH PULLER



PUMP / HOSE / FITTINGS



STANDARD PULLERS (THREE JAWS)

Output (Ton)	Model No.	Reach (mm)	Spread (mm)	Stroke (mm)	Weight (Kg)
4	TP 4N	165	30-200/260	55-105	8
6	TP 6N	165	30-200/260	82-130	8
8	TP 8N	210	30-250/355	82-160	10
15	TP 15N	240	50-280/380	82-180	12



COBRA JAWS PULLERS

Output (Ton)	Model No.	Reach (mm)	Spread (mm)	Stroke (mm)	Weight (Kg)
10	TP 10B	195	30-250/310	82-130	11
12	TP 12B	240	30-300/370	82-160	20
20	TP 20B	275	50-360/430	82-180	26
25	TP 25B	315	50-410/480	110-220	36
30	TP 30B	405	100-540/610	110-260	55

TORC STAR BOLTING TOOLS



OFFICE : No. 227, Lodha Supremus 2,
Road No. 22, Wagle Estate, Thane (W) 400604.
Mob.: +91 9811313420 / +91 9820120501
Email: sales@torcstar.com | Website: www.torcstar.com

USA OFFICE :
1736 125th Avenue SE
Bellevue, WA 98005
Tel.: #334-714-0945
Email: usa@torcstar.com



ISO 9001:2008

FACTORY : Plot No. 268, Pandey Industrial Estate, Pokhran Road No. 1,
Upvan, Thane (W) 400 606, India. Tel.: 91-22-2585 3106 / 2588 4343

www.torcstar.com